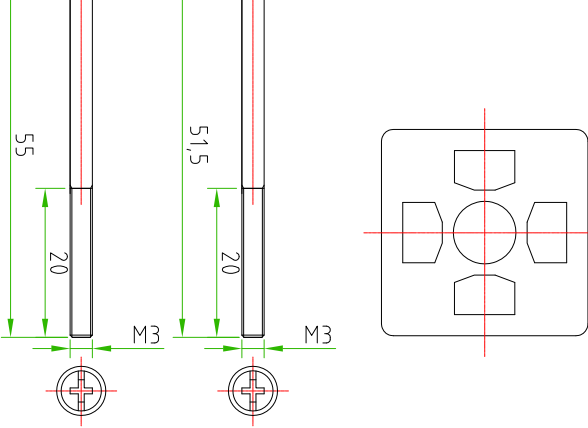
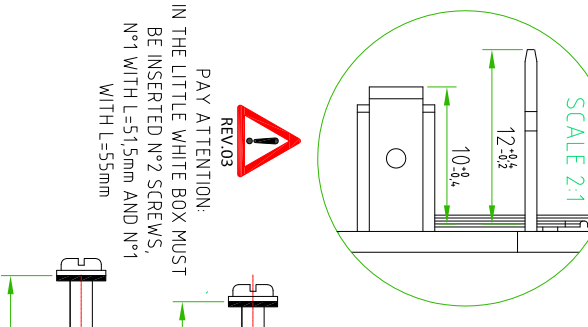
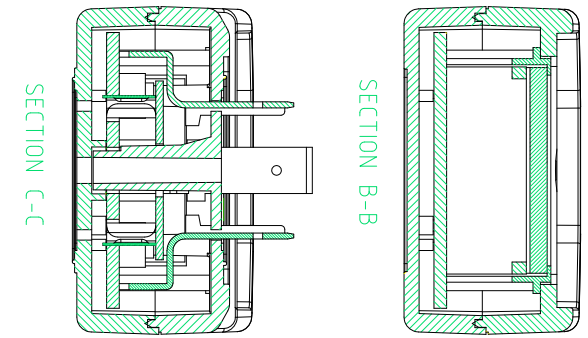
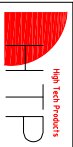


CONNECTOR FEATURES	
PRODUCT TYPE	DIGITAL TIMER
HOUSING COLOUR	BLACK
CONTACT TYPE	2POLES+EARTH
CONTACT SPACING	18mm
EARTH POSITIONING H	6/12
FIXING SCREW	M3X15
FLAT GASKET	NBR
PROTECTION CLASS	IP65
RATED VOLTAGE	24-240V AC/DC $\pm 10\%$ 50/60Hz
RATED CURRENT	1A
CURRENT CONSUMPTION	4mA max
OFF TIME	FROM 0min TO 9.5min (STEP 0.5min.) FROM 10min. TO 99min. (STEP 1min.)
ON TIME	FROM 0s TO 9.5s (STEP 0.5s.) FROM 10s TO 99s (STEP 1s.)
REPEAT ACCURACY	$\pm 0.01\%$
INDICATORS	GREEN LED:OFF PHASE RED LED:ON PHASE
TIMER WITH H.T.P. LOGO	



DATE	REV.	DESCRIPTION	NAME
11.01.2017	03	IN THE LITTLE WHITE BOX MUST BE INSERTED N°2 SCREWS, N°1 WITH L=51,5mm AND N°1 WITH L=55mm	ROBERTO SUGLIANI
03.05.2016	02	H.T.P. AND CE LOGO ARE CHANGED	ROBERTO SUGLIANI
22.02.2013	01	SILK PRINT THE H.T.P. PRODUCTION CODE ON THE BACK SIDE OF THE TIMER	LORENZO CIMMINO
TOLERANZE		$\pm 0.3$	DESIGN N.
UDM		ANGOLO	02-11-11
DESCRIZIONE		DISEGNATORE	LORENZO CIMMINO
DIGITAL TIMER		CONTROLLATO	
TP9		SCALE	1 : 1
TIMER			
MATERIALE			



H.T.P. HIGH TECH PRODUCTS

TIMER-DIG