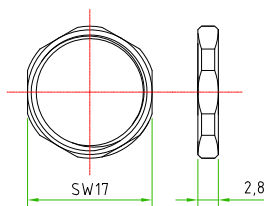
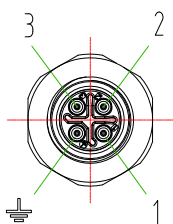
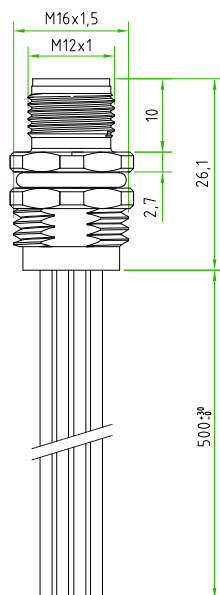
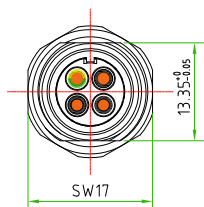




Rev.	Modify	Date	Signed	Approved

Rev.	Modify	Date	Signed	Approved

Rev.	Modify	Date	Signed	Approved

BLACK 1 ○ ————— ■ 1  
 BLACK 2 ○ ————— ■ 2  
 BLACK 3 ○ ————— ■ 3  
 YELLOW-GREEN ○ ————— ■ ⚡



CONNECTOR FEATURES	PRODUCT TYPE	M12 CIRCULAR CONNECTOR S-CODED TO PANEL WITH SOLDERED WIRES
	MOUNTING TYPE	FRONTAL
	CONTACTS TYPE	MALE 4POLES
	NUMBER OF CONTACTS CONNECTED	N°4
	HOUSING MATERIAL	Brass+Nickel plated
	INTERNAL CORE MATERIAL	PA66 BASF C3U
	O-RING MATERIAL	NBR
	FIXING THREAD TYPE	PG9 WITH CUT 13,35mm
	FIXED NUT (SW)	SW17
	MOBILE NUT (SW)	SW17
	RATED VOLTAGE	630V AC
	RATED CURRENT	12A
WIRES FEATURES	COUPLING TORQUE VALUE	0,6 Nm (SUGGEST)
	CONNECTOR WITHOUT ANY LOGO	
	NUMBER OF CONDUCTORS	N°4
	CONDUCTORS SECTION	AWG16
	CONDUCTORS INSULATION MATERIAL	PVC ULSTYLE 1015 
	CABLE LENGHT	500mm
	PEELING AND TINNING	-
WIRES PROVIDED BY H.T.P. srl		
<div> PAY ATTENTION: THE FIXING THREAD MUST BE WITH CUT</div>		

CUSTOMER APPROVAL

SIGNATURE

DATE

PLEASE SIGN  
AND RETURN

Designer	SUGLIANI R.	Date	2016-12-16	Tolerance	±0.3	Units:	mm	Series	M12 S-CODED	Drawing n. 1-1
Approved	CIMMINO L.	Date	2016-12-16	Scale	1:1	Size:	A4	Customer code:		



#### DESCRIPTION

S-CODED CIRCULAR CONNECTOR M12, TO PANEL, FRONTAL MOUNTING, MALE, 4POLES, FIXING THREAD PG9 COMPLETE WITH CUT, WITH N°4 WIRES PVC AWG16, L=500mm; CONNECTOR WITHOUT ANY LOGO

#### H.T.P. PART NUMBER

S-12MP4810E-PG9-UL

A4

