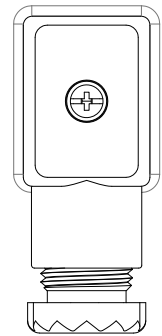
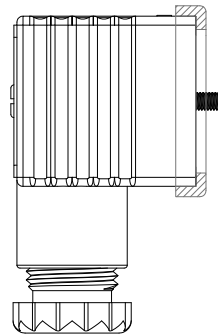
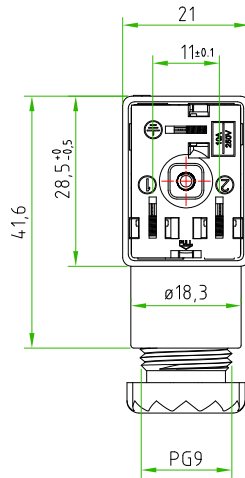
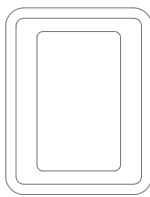
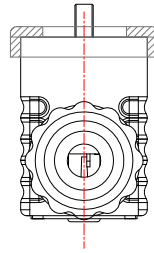
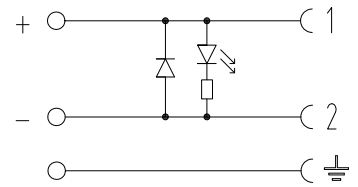


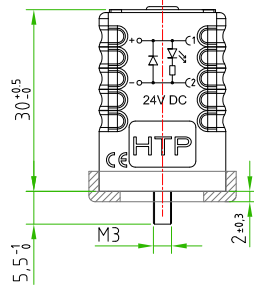
Rev.	Modify	Date	Firma	Approved

Rev.	Modify	Date	Firma	Approved

Rev.	Modify	Date	Signed	Approved
01	-	2017-02-15	SUGLIANI CIMMINO	



REV.01



CONNECTOR FEATURES	INDUSTRIAL STANDARD FORM B FIELD ATTACHABLE.
PRODUCT TYPE	INDUSTRIAL STANDARD FORM B FIELD ATTACHABLE.
HOUSING MATERIAL/COLOUR	PA66 /TRANSPARENT
PRESS-CABLE MATERIAL/COLOUR	PA66 /BLACK
INTRINAL CORE MATERIAL/COLOUR	PA66 /BLACK
HEIGHT HOUSING	30mm
CONTACTS SPACING	11mm
CONTACTS TYPE	SCREW CONTACTS(with protection plate)
NUMBER OF POLES	2POLES+EARTH
EARTH POSITIONING	H.12 (TURNABLE)
CABLE EXIT	PG9 UNIFIED
SUITABLE CABLE	FROM ø6mm TO ø8mm
MAX.CONDUCTOR SIZE	1,5mm <sup>2</sup>
PROTECTION CLASS	IP67
CIRCUIT TYPE	RED LED+DIODE(1A)
RATED VOLTAGE	24V DC
CONNECTOR TEMPERATURE RANGE	from -40°C to +90°C
GASKET TYPE	PROFILED NBR
FIXING SCREW	M3X0,5 L=32,5mm
CONNECTOR WITH H.T.P. LOGO	

CUSTOMER APPROVAL

SIGNATURE	DATE

PLEASE SIGN AND RETURN

Designer	SUGLIANI R.	Date	2016-08-05	Tolerance	±0,2	Units:	mm	Series	INDUSTRIAL STANDARD (form B)	Drawing n.	1/1
Approved	CIMMINO L.	Date	2016-08-05	Scale	1:1	Size:	A4	Customer code:			

DESCRIPTION

RECTANGULAR CONNECTOR INDUSTRIAL STANDARD FORM B, FIELD ATTACHABLE, 2P.+PE, WITH RED LED+DIODE (1A), 24V DC, TRANSPARENT HOUSING, PG9 unified. CONNECTOR WITH H.T.P. LOGO.

H.T.P.PART NUMBER

M1TS2DL1

