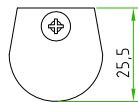
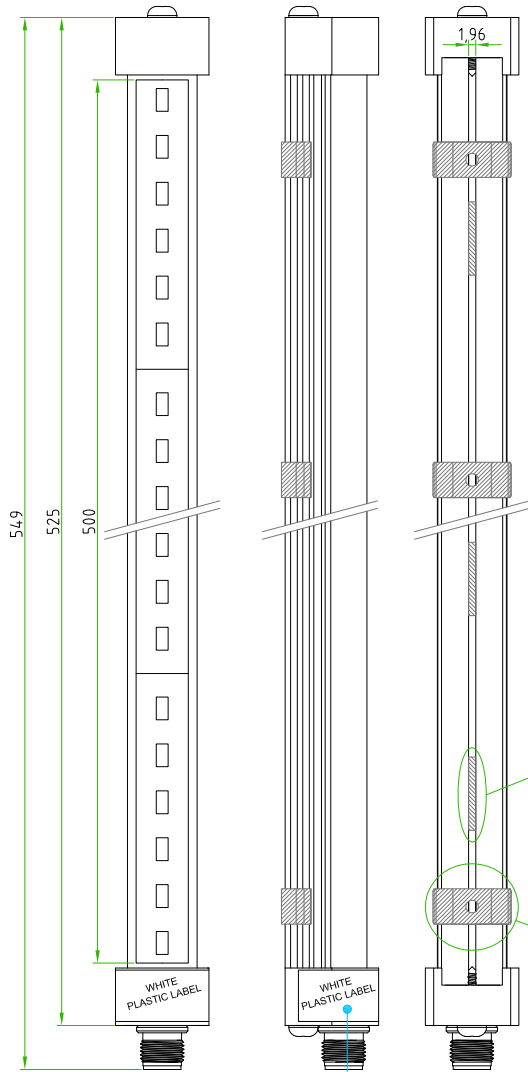
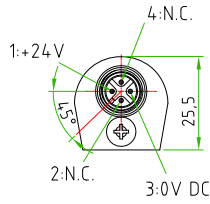


Rev.	Modify	Date	Signed	Approved

Rev.	Modify	Date	Signed	Approved
04	-	2019.04.17	SUGLIANI	CIMMINO
05	-	2021.03.02	SUGLIANI	CIMMINO

Rev.	Modify	Date	Signed	Approved
01	-	2017.03.29	SUGLIANI	CIMMINO
02	-	2018.08.10	SUGLIANI	CIMMINO
03	-	2018.12.07	SUGLIANI	CIMMINO

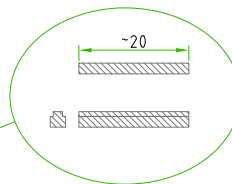


LIGHTING FEATURES	PRODUCT TYPE	INDUSTRIAL LIGHTING
	INDUSTRIAL LIGHTING TYPE	LED LIGHT TUBE WITH M12 CONNECTORS
	TUBE DIAMETER	ø24,8mm
	LIGHTING LENGTH	500mm
	LIGHT COLOUR	4500K PURE WHITE
	RATED VOLTAGE	24V DC
	RATED POWER	7,7W
	LUMINOUS FLUX	900lm
	MATERIALS	PLASTIC+ALLUMINIUM
	PROTECTION CLASS	IP54
M12 FEATURES	OPERATING TEMPERATURE	FROM -25°C TO +60°C
	CONNECTOR TYPE	M12 TO PANEL
	MOUNTING TYPE	FRONTAL
	CONTACT TYPE	MALE
	NUMBER OF CONTACTS	n°4
	NUMBER OF CONTACTS CONNECTED	n°2
	HOUSING MATERIAL	BRASS+NICKEL PLATED
	CONNECTOR WITHOUT ANY LOGO	

PACKAGING THIS PRODUCT MUST BE ROLLED WITH PLURIBALL FOIL AND MUST BE PACKED IN A SINGLE CARTON BOX COMPLETE OF CAP

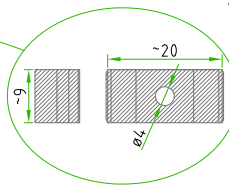
CODE: CAPS-12-F-P

MAGNETIC BARS
REV.04



REV.04
ON THE LAMP MUST BE INSERTED N°3 MAGNETIC BARS

MOUNTING CLIPS
REV.01



REV.01
ON THE LAMP MUST BE APPLIED N°3 MOUNTING CLIPS

MALE	PIN #	
	1	+24V
	3	0V DC
2 / 4		NOT CONN.

REV.05
ON THE LAMP (M12 MALE SIDE) MUST BE APPLIED THIS WHITE PLASTIC LABEL

40

Product type: LED LAMPS
HTP P/N: LED-P0500-12MD
Protection degree: IP54
Power 24VDC - 7,7W
Protection class: II

RoHS Compliant

Male

PIN	Vn
1	24V
3	0V

Prod: #####
Made in China

Year of production

Designer	SUGLIANI R.	Date	2016-10-04	Tolerance	±0.3	Units:	mm	Series	INDUSTRIAL LIGHTING	Drawing n.	1-1
Approved	CIMMINO L.	Date	2016-10-04	Scale	1:2	Size:	A4	Customer code:			

	DESCRIPTION	H.T.P.PART NUMBER
	INDUSTRIAL LIGHTING,LED LIGHT TUBE WITH M12 CONNECTORS MALE 4 POLES TO PANEL,FRONTAL MOUNTING. 24V DC ,IP54 ,LAMP LENGTH=500mm	LED-P0500-12MD