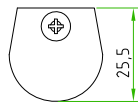
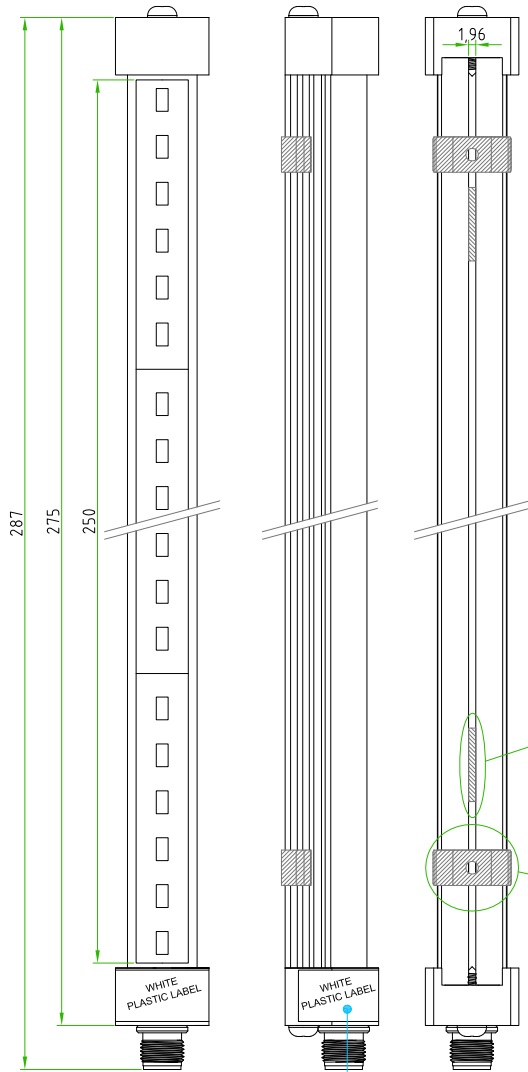
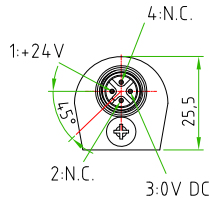


Rev.	Modify	Date	Signed	Approved

Rev.	Modify	Date	Signed	Approved
04	-	2019.04.17	SUGLIANI	CIMMINO
05	-	2021.03.17	SUGLIANI	CIMMINO

Rev.	Modify	Date	Signed	Approved
01	-	2018.08.10	SUGLIANI	CIMMINO
02	-	2018.08.10	SUGLIANI	CIMMINO
03	-	2018.12.07	SUGLIANI	CIMMINO



LIGHTING FEATURES	PRODUCT TYPE	INDUSTRIAL LIGHTING
	INDUSTRIAL LIGHTING TYPE	LED LIGHT TUBE WITH M12 CONNECTOR
	TUBE DIAMETER	ø24,8mm
	LIGHTING LENGHT	250mm
	LIGHTCOLOUR	4500K PURE WHITE
	RATED VOLTAGE	24V DC
	RATED POWER	3,9W
	LUMINOUS FLUX	450lm
	MATERIALS	PLASTIC+ALLUMINIUM
	OPERATING TEMPERATURE	FROM -25°C TO +60°C
PROTECTION CLASS	IP54	
M12 FEATURES	CONNECTOR TYPE	M12 TO PANEL
	MOUNTING TYPE	FRONTAL
	CONTACT TYPE	MALE
	NUMBER OF CONTACTS	n°4
	NUMBER OF CONTACTS CONNECTED	n°2
	HOUSING MATERIAL	BRASS+NICKEL PLATED
CONNECTOR WITHOUT ANY LOGO		



THIS PRODUCT MUST BE ROLLED WITH PLURIBALL FOIL AND MUST BE PACKED IN A SINGLE CARTON BOX COMPLETE OF CAP

PACKAGING

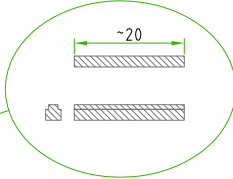
MAGNETIC BARS  
REV.04

CODE: CAPS-12-F-P



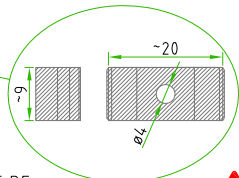
REV.04

ON THE LAMP MUST BE INSERTED N°2 MAGNETIC BARS



MOUNTING CLIPS  
REV.01

ON THE LAMP MUST BE APPLIED N°2 MOUNTING CLIPS



ON THE LAMP (M12 MALE SIDE) MUST BE APPLIED THIS WHITE PLASTIC LABEL



REV.05

MALE	PIN #	
	1	+24V
	3	0V DC
2 / 4		NOT CONN.

Product type: LED LAMPS  
HTP P/N: LED-P0250-12MD  
Protection degree: IP54  
Power 24VDC - 3,9W  
Protection class: II

Male

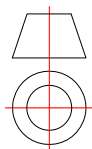
PIN	Vn
1	24V
3	0V

Prod: #####  
Made in China

Year of production

A4

Designer	SUGLIANI R.	Date	2016-10-04	Tolerance	±0.3	Units:	mm	Series	INDUSTRIAL LIGHTING	Drawing n.	1-1
Approved	CIMMINO L.	Date	2016-10-04	Scale	1:1	Size:	A4	Customer code:			



**DESCRIPTION**  
INDUSTRIAL LIGHTING,LED LIGHT TUBE WITH M12 CONNECTORS  
MALE 4 POLES TO PANEL,FRONTAL MOUNTING.  
24V DC ,IP54 ,LAMP LENGHT=250mm

H.T.P.PART NUMBER

LED-P0250-12MD