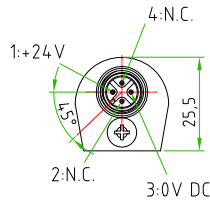
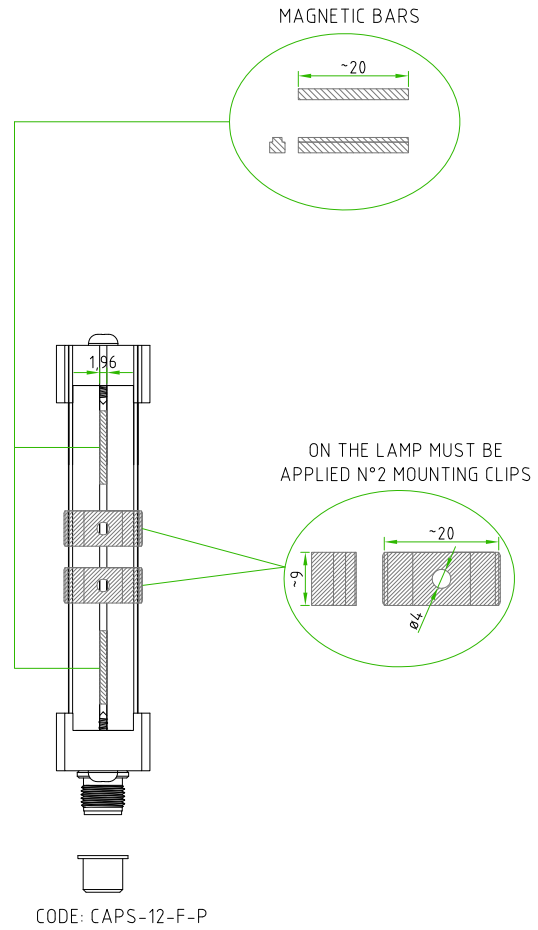
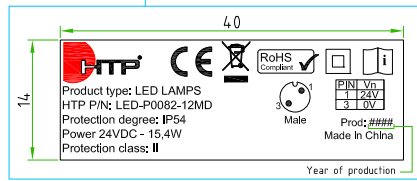
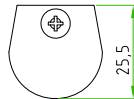
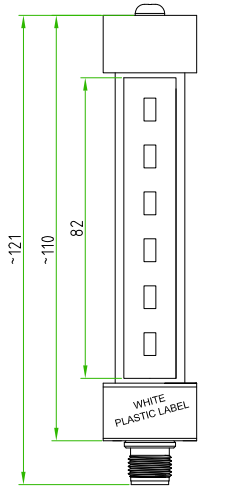


Rev.	01	Modify	-	Date	2021.03.17	Signed	SUGLIANI	Approved	CIMMINO
Rev.		Modify		Date		Signed		Approved	
Rev.		Modify		Date		Signed		Approved	
Rev.		Modify		Date		Signed		Approved	



MALE	PIN #	
	1	+24V
	3	0V DC
	2 / 4	NOT CONN.



!
ON THE LAMP (M12 MALE SIDE)
MUST BE APPLIED THIS WHITE
PLASTIC LABEL
REV.01

LIGHTING FEATURES		INDUSTRIAL LIGHTING		M12 FEATURES	
PRODUCT TYPE	INDUSTRIAL LIGHTING	CONNECTOR TYPE	M12 TO PANEL		
INDUSTRIAL LIGHTING TYPE	LED LIGHT TUBE WITH M12 CONNECTOR	MOUNTING TYPE	FRONTAL		
TUBE DIAMETER	ø24,8mm	CONTACT TYPE	MALE		
LIGHTING LENGTH	82mm	NUMBER OF CONTACTS	n°4		
LIGHTCOLOUR	4500K PURE WHITE	NUMBER OF CONTACTS CONNECTED	n°2		
RATED VOLTAGE	24 V DC	HOUSING MATERIAL	BRASS+NICKEL PLATED		
RATED POWER	1,3W	CONNECTOR WITHOUT ANY LOGO			
LUMINOUS FLUX	150lm				
MATERIALS	PLASTIC+ALLUMINIUM				
OPERATING TEMPERATURE	FROM -25°C TO +60°C				
PROTECTION CLASS	IP54				

!
PACKAGING
THIS PRODUCT MUST BE ROLLED WITH PLURIBALL FOIL AND
MUST BE PACKED IN A SINGLE CARTON BOX COMPLETE OF CAP

CUSTOMER APPROVAL	
SIGNATURE	DATE
PLEASE SIGN AND RETURN	

Designer	CIMMINO L.	Date	2019-05-30	Tolerance	±0.3	Units:	mm	Series	INDUSTRIAL LIGHTING	Drawing n.	1-1
Approved	MAZZOLA M.	Date	2019-05-30	Scale	1:1	Size:	A4	Customer code:			

DESCRIPTION
INDUSTRIAL LIGHTING,LED LIGHT TUBE WITH M12 CONNECTORS
MALE 4POLES TO PANEL,FRONTAL MOUNTING.
24V DC ,IP54 ,LAMP LENGTH=82mm

H.T.P.PART NUMBER
LED-P0082-12MD

