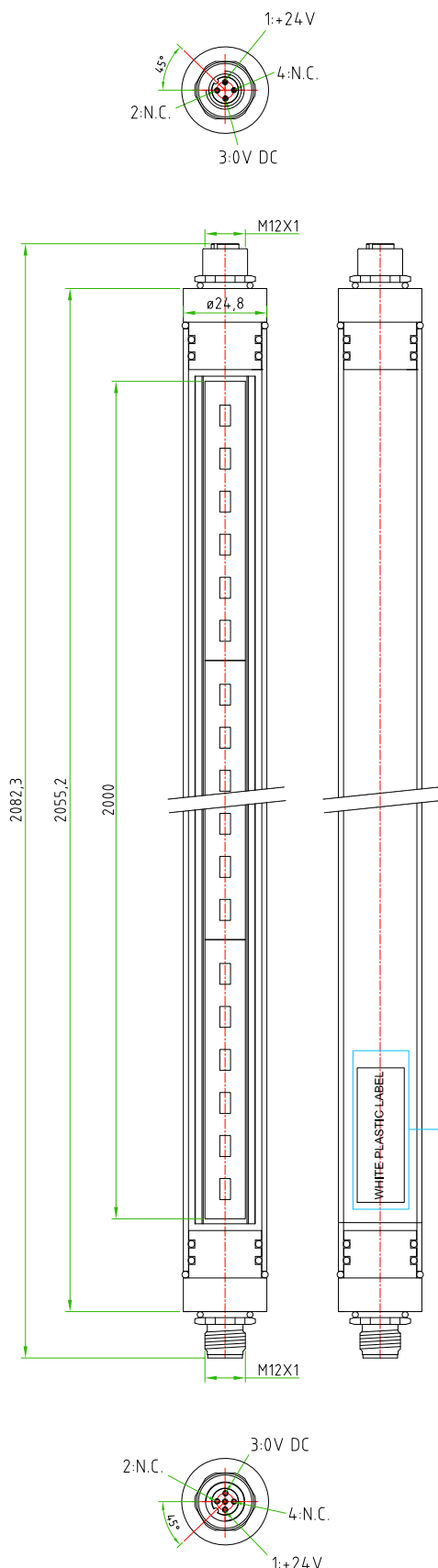


Rev.	Modify	Date	Signed	Approved

Rev.	Modify	Date	Signed	Approved

Rev.	Modify	Date	Signed	Approved
01	-	2018.05.16	SUGLIANI	CIMMINO
02	-	2018.12.07	SUGLIANI	CIMMINO
03	-	2021.03.17	SUGLIANI	CIMMINO



LIGHTING FEATURES	PRODUCT TYPE	INDUSTRIAL LIGHTING
	INDUSTRIAL LIGHTING TYPE	LED LIGHT TUBE WITH M12 CONNECTORS
	TUBE DIAMETER	$\varnothing 24,8$ mm
	LIGHTING LENGHT	2000mm
	LIGHTCOLOUR	6000K WHITE
	COLOUR RENDERING(RA)	>80
	RATED VOLTAGE	24V DC
	RATED POWER	30,7W
	LUMINOUS FLUX	4400 lm
	MATERIALS	PLASTIC+ALLUMINIUM
M12 FEATURES	PROTECTION CLASS	IP67
	OPERATING TEMPERATURE	FROM -25°C TO +60°C
	CONNECTOR TYPE	M12 TO PANEL
	MOUNTING TYPE	FRONTAL
	CONTACT TYPE	FEMALE-MALE
	NUMBER OF CONTACTS	n°4
	NUMBER OF CONTACTS CONNECTED	n°2
	HOUSING MATERIAL	BRASS+NICKEL PLATED
	CONNECTOR WITHOUT ANY LOGO	

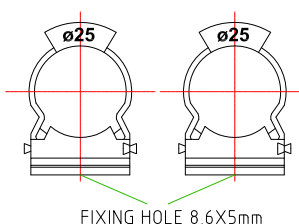
MALE	PIN #	
	1	+24V
	3	0V DC
	2 / 4	NOT CONN.

FEMALE	PIN #	
	1	+24V
	3	0V DC
	2 / 4	NOT CONN.



PACKAGING
REV.01

THIS PRODUCT MUST BE ROLLED WITH PLURIBALL FOIL AND MUST BE PACKED IN A SINGLE CARTON BOX COMPLETE OF CAPS AND N°4 FIXING TIE CLIPS $\varnothing 25$ mm



CODE:
CAPS 12-F-P

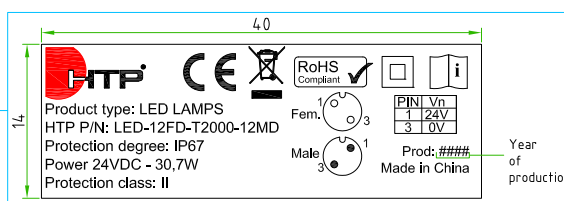


CODE:
CAPS 12-M-P



ON THE LAMP (M12 MALE SIDE)
MUST BE APPLIED THIS WHITE
PLASTIC LABEL

REV.03



Designer	SUGLIANI R.	Date	2016-10-04	Tolerance	$\pm 0,3$	Units:	mm	Series	INDUSTRIAL LIGHTING	Drawing n. 1-1
Approved	CIMMINO L.	Date	2016-10-04	Scale	1:1	Size:	A4	Customer code:		



DESCRIPTION

INDUSTRIAL LIGHTING,LED LIGHT TUBE WITH M12 CONNECTORS
MALE 4POLES AND FEMALE 4POLES TO PANEL,FRONTAL MOUNTING.
24V DC,LAMP LENGHT=2000mm

H.T.P.PART NUMBER

LED-12FD-T2000-12MD