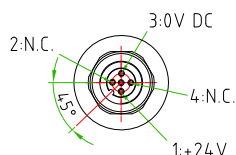
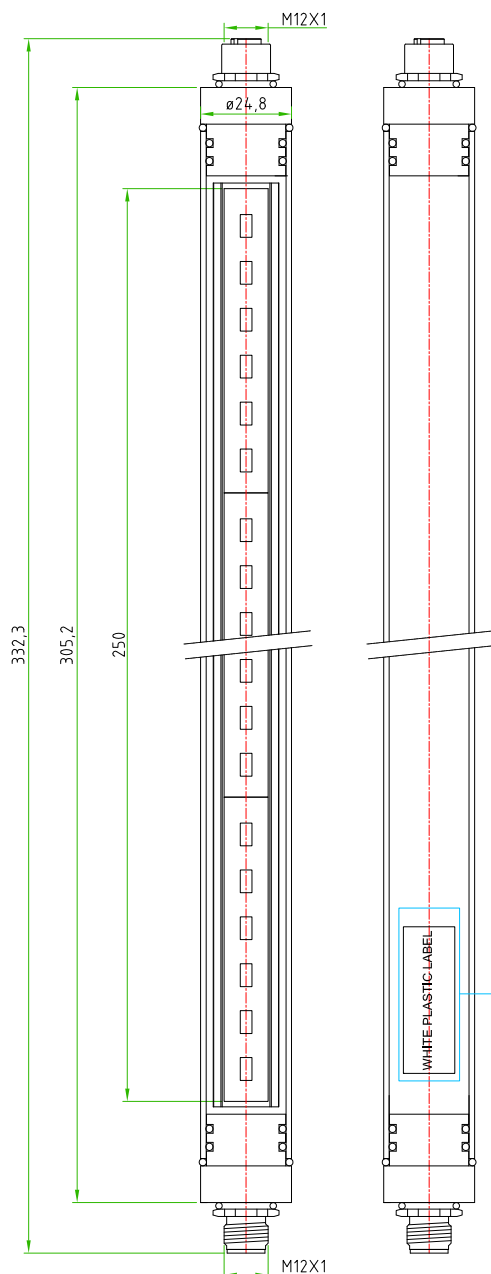
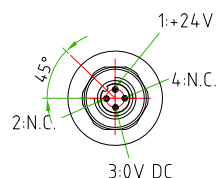


Rev.	Modify	Date	Signed	Approved

Rev.	Modify	Date	Signed	Approved

Rev.	Modify	Date	Signed	Approved
01	-	2018.08.10	SUGLIANI	CIMMINO
02	-	2018.12.07	SUGLIANI	CIMMINO
03	-	2021.03.17	SUGLIANI	CIMMINO

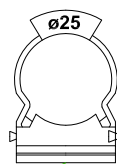
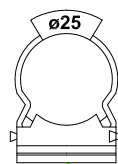


LIGHTING FEATURES	PRODUCT TYPE	INDUSTRIAL LIGHTING
	INDUSTRIAL LIGHTING TYPE	LED LIGHT TUBE WITH M12 CONNECTORS
	TUBE DIAMETER	24,8mm
	LIGHTING LENGHT	250mm
	LIGHTCOLOUR	6000K WHITE
	COLOUR RENDERING(RA)	>80
	RATED VOLTAGE	24V DC
	RATED POWER	3,9W
	LUMINOUS FLUX	550 lm
	MATERIALS	PLASTIC+ALLUMINIUM
M12 FEATURES	PROTECTION CLASS	IP67
	OPERATING TEMPERATURE	FROM -25°C TO +60°C
	CONNECTOR TYPE	M12 TO PANEL
	MOUNTING TYPE	FRONTAL
	CONTACT TYPE	FEMALE-MALE
	NUMBER OF CONTACTS	n°4
	NUMBER OF CONTACTS CONNECTED	n°2
	HOUSING MATERIAL	BRASS+NICKEL PLATED
	CONNECTOR WITHOUT ANY LOGO	



PACKAGING

THIS PRODUCT MUST BE ROLLED WITH PLURIBALL FOIL AND MUST BE PACKED IN A SINGLE CARTON BOX COMPLETE OF CAPS AND N°2 FIXING TIE CLIPS 25mm



CODE: CAPS 12-F-P



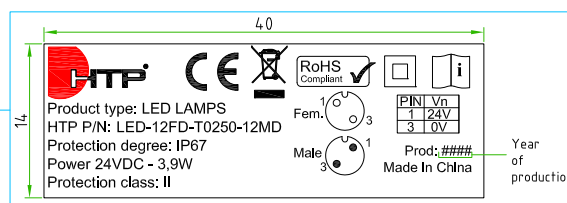
CODE: CAPS 12-M-P

FIXING HOLE 8,6X5mm



ON THE LAMP (M12 MALE SIDE) MUST BE APPLIED THIS WHITE PLASTIC LABEL

REV.03



MALE	PIN #	
	1	+24V
	3	0V DC
	2 / 4	NOT CONN.

FEMALE	PIN #	
	1	+24V
	3	0V DC
	2 / 4	NOT CONN.

CUSTOMER APPROVAL

SIGNATURE

DATE

PLEASE SIGN AND RETURN

Designer	SUGLIANI R.	Date	2016-10-04	Tolerance	±0.3	Units:	mm	Series	INDUSTRIAL LIGHTING	Drawing n. 1-1
Approved	CIMMINO L.	Date	2016-10-04	Scale	1:1	Size:	A4	Customer code:		



DESCRIPTION

INDUSTRIAL LIGHTING,LED LIGHT TUBE WITH M12 CONNECTORS
MALE 4POLES AND FEMALE 4POLES TO PANEL,FRONTAL MOUNTING.
24V DC,LAMP LENGHT=250mm

H.T.P.PART NUMBER

LED-12FD-T0250-12MD

