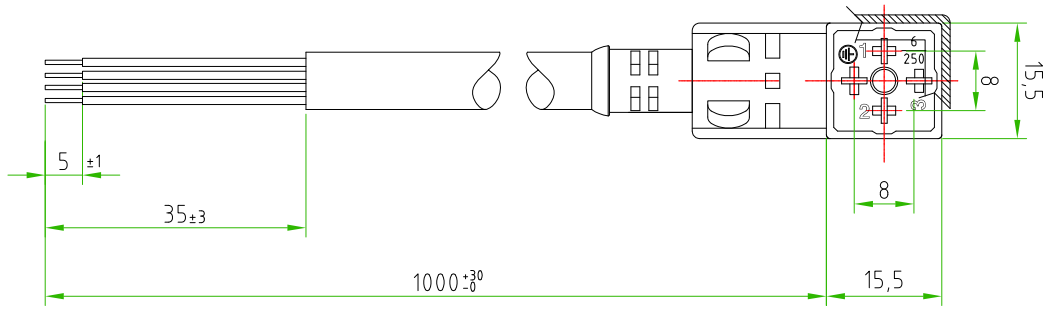
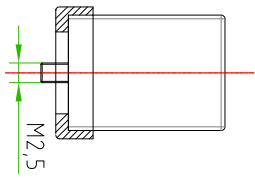
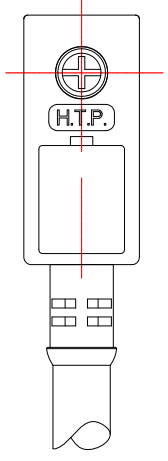
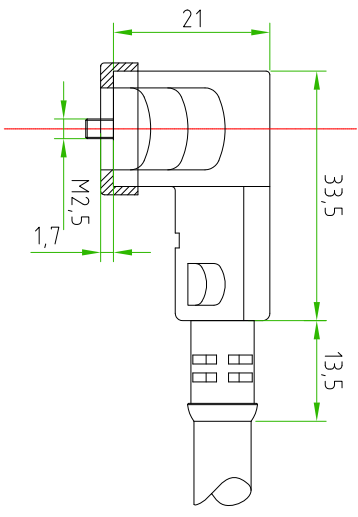


- BROWN ○ ———— (1
- BLUE ○ ———— (2
- BLACK ○ ———— (3
- YELLOW / GREEN ○ ———— (± (H:6)



CABLE FEATURES		CONNECTOR FEATURES	
H.T.P. CABLE CODE	CAV0 B1	PRODUCT TYPE	CP2 SERIES
NUMBER OF CONDUCTORS	N°4	HOUSING COLOUR	BLACK
CONDUCTOR SECTION	0.5mm ²	CONTACT TYPE	3POLES+EARTH
CABLE MATERIAL	PVC IEC332-1H03VVF	CONTACT SPACING	8mm
CABLE COLOUR	BLACK	CABLE LENGTH	1000mm
CONDUCTOR INSULATION MATERIAL	PVC	PROTECTION CLASS	IP67
		STRIPPING	35mm STANDARD
		PEELING AND TINNING	5mm STANDARD
		FIXING SCREW	M2,5X21,5
		PROFILED GASKET	NBR
		EARTH POSITIONING H	6
		VOLTAGE	1-250V AC/DC
		CONNECTOR WITHOUT ELECTRONIC	
		CONNECTOR WITH H.T.P.LOGO	

TOLLERANZE	DISIGNATORE	DATA	SCALA	REF. CLIENTE
UDM	±0,3 ANGOLI CONTROLATO	04-08-14	1 : 1	
DESCRIZIONE DIN/3650/C 3POLES-EARTH(H:6) WITHOUT ELECTRONIC WITH CABLE PVC/PVC IEC332-1H03VVF 4X0.5mm ² BLACK L=1m CONNECTOR WITH FLAT GASKET WITH H.T.P.LOGO		TR90	CP1	MATERIALE
HIGH TECH PRODUCTS H.T.P. HIGH TECH PRODUCTS		CODE	CP1N03000AB11	