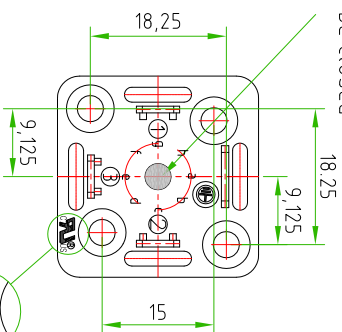


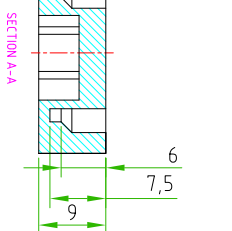
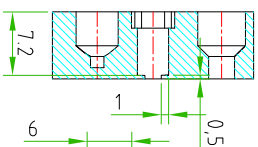
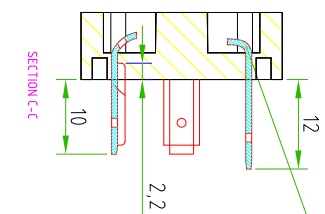
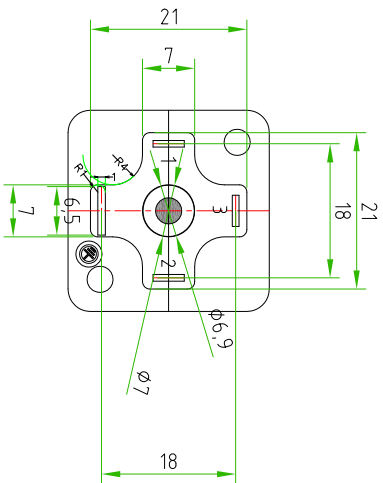
PAY ATTENTION:
The hole must be closed



PAY ATTENTION
On the base must be moulded UL **PA66** logo



SCALE 2:1



PAY ATTENTION
The contacts must be overmoulded and the length must be same of the customer samples

BASE FEATURES	
PRODUCT TYPE	SQUARE BASE BG6
CONTACTS SPACING	18mm
NUMBER OF CONTACTS	3POLES+EARTH
CONTACT MATERIAL AND TREATMENT	PCuZn SILVER PLATED
CONTACT TYPE	SOLDERED
MATERIAL BASE	PA66-BASF C3U
COLOR BASE	GREY RAL 7030
PROTECTION CLASS	IP67
NUMBER OF FIXING HOLES	N°2
RATED VOLTAGE	250V
TEMPERATURE RANGE	-40°C TO +125°C
BASE WITHOUT THE GASKET AND FIXING SCREW	

TOLLERANZE		DISIGNATORE		DATA		SCALA		DISIGNO N	
UDM	ANGOLO	ROBERTO SUGLIANI CONTROLATO		08-03-2017		1:1			
DESCRIZIONE Special Basis for DIN43650-A 3poles+earth material PA66 - BASF C3U				TIPO SPECIAL BASIS DIN43650-A		MATERIALE			
H.T.P. HIGH TECH PRODUCTS				CODICE		BG6G03000-NC			