

FLAT GASKET

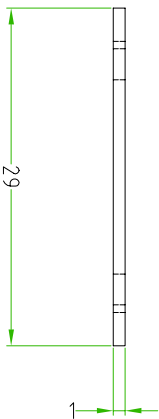
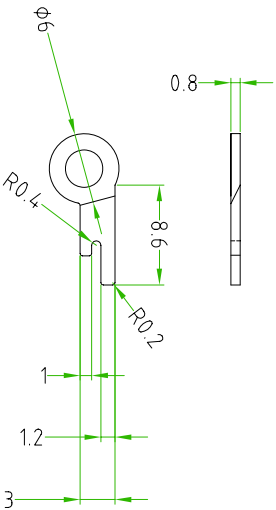
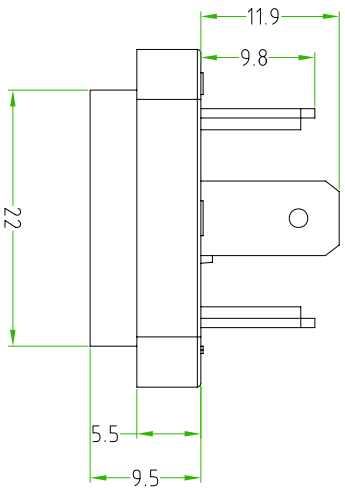
THE CENTRAL SCREW MUST BE CLOSED

PAY ATTENTION:  
USE THE FIXING SCREW M3X7.3mm



THIS CODE IS SPECIAL BECAUSE HAS THE EYELET ( $\phi$ INT 3.2mm/ $\phi$ EXT 6mm)  
SOLDERED TO THE EARTH PIN  
PLEASE PAY ATTENTION TO THE POSITION OF THE EYELET.

BASE FEATURES	
PRODUCT TYPE	SQUARE BASE
NUMBER OF CONTACTS	3POLES+EARTH
CONTACT MATERIAL AND TREATMENT	PCuZn SILVER PLATED
CONTACT TYPE	SOLDERED
MATERIAL BASE	PA66
COLOR BASE	BLACK
PROTECTION CLASS	IP67
TEMPERATURE RANGE	-25°C TO +70°C
RETED VOLTAGE	250V
NUMBER OF FIXING HOLES	N°4
NUMBER OF SCREW M3X7.3	N°4
FLAT GASKET	NBR
DIAMETER OF CIRCULAR PART	22mm



TOLLERANZE		DISIGNATORE		DATA		SCALA		DISIGNO N.	
UDM	ANGOLO	±0.2	Mazzolini Marco	23.09.09	n.d				
DESCRIZIONE		CONTROLATO		MATERIALE					
Basis for DIN43650-A 3poles+earth with circular part+Metal part+flat gasket				BASIS DIN43650-A		PA66			
HTP HIGH TECH PRODUCTS		H.T.P.		CODICE					
				BG4N03000-EY					