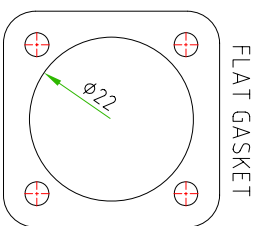
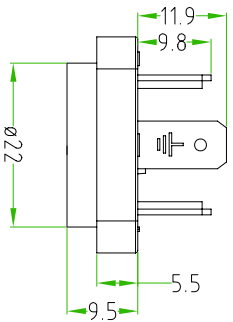
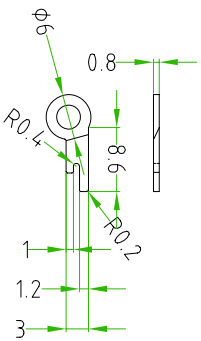
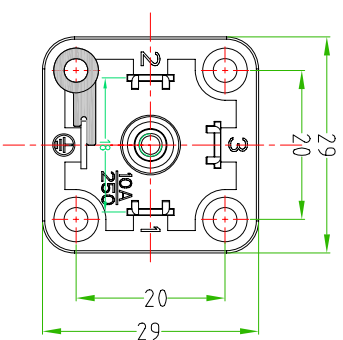
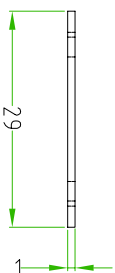


**THE CENTRAL SCREW MUST BE OPEN**



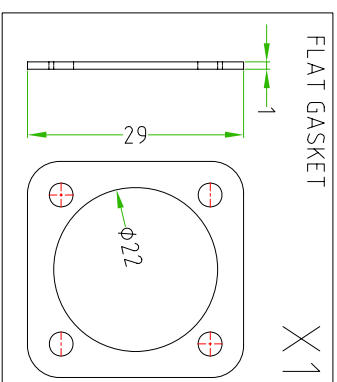
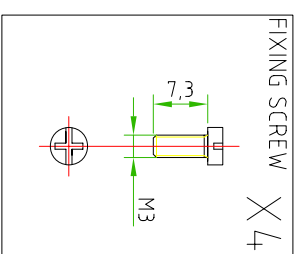
FLAT GASKET



**EYELET (ØINT 3,2mm/ØEXT 6mm)  
SOLDERED TO THE EARTH PIN  
PLEASE PAY ATTENTION TO THE POSITION OF THE EYELET.**

BASE FEATURES	
PRODUCT TYPE	SQUARE BASE
NUMBER OF CONTACTS	3POLES+EARTH
CONTACT MATERIAL AND TREATMENT	PCuZn SILVER PLATED
CONTACT TYPE	SOLDERED
MATERIAL BASE	PA66
COLOUR BASE	BLACK
PROTECTION CLASS	IP67
RETED VOLTAGE	250V
NUMBER OF FIXING HOLES	N°4
NUMBER OF SCREW M3X7.3	N°4
FLAT GASKET	NBR
DIAMETER OF CIRCULAR PART	22mm

**! BG4 BASE WITH CENTRAL SCREW OPEN AND WITH EYELET SOLDERED TO THE EARTH PIN.**



TOLLERANZE	±0.2	DISIGNATORE	LORENZO CHINIO	DATA	19.09.12	SCALA	1:1	DISIGNO N.	
UDM	ANGOLO	CONTROLLO							
DESCRIZIONE SQUARE BASE 28.4X28.4 FOR DIN3650/A 18mm 2POLES+E. BLACK N°4 FIXING HOLES WITH EYELET SOLDERED TO THE EARTH PIN AND CENTRAL SREW OPEN									
								TIPO	BG4
								MATERIALE	
								CODE	BG4N03000-EY-HO



H.T.P.  
HIGH TECH PRODUCTS