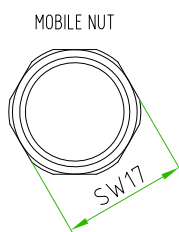
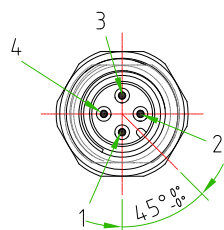
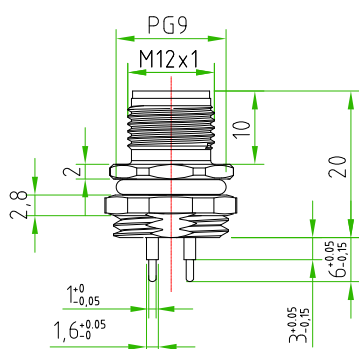
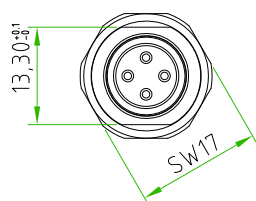
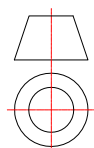


| Rev. | Modify | Date | Signed | Approved |
|------|--------|------|--------|----------|
| | | | | |

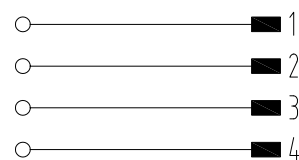
| Rev. | Modify | Date | Signed | Approved |
|------|--------|------|--------|----------|
| | | | | |

| Rev. | Modify | Date | Signed | Approved |
|------|--------|------|--------|----------|
| | | | | |

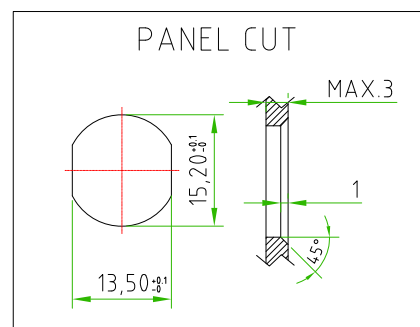
A4



PAY ATTENTION to the position of the polarization key towards the CUT and the exagonal fixing nut.



| | |
|------------------------------|--|
| PRODUCT TYPE | M12 CIRCULAR CONNECTOR TO PANEL WITH CONTACTS SUITABLE FOR PCB |
| TYPE MOUNTING | FRONTAL MOUNTING |
| CONTACTS TYPE | MALE 4POLES |
| NUMBER OF CONTACTS CONNECTED | N°4 |
| HOUSING MATERIAL | BRASS+NICKEL PLATED |
| O-RING MATERIAL | NBR |
| FIXING THREAD | PG9 |
| SIZE CUT | 13,30mm (+0,1/-0) |
| SIZE FIXED NUT(SW) | SW17 |
| SIZE MOBILE NUT(SW) | SW17 |
| PROTECTION CLASS | IP67 |
| RATED VOLTAGE | 250V AC/DC |
| RATED CURRENT | 4 A |
| CONNECTOR WITHOUT ANY LOGO | |



CUSTOMER APPROVAL

SIGNATURE

DATE

PLEASE SIGN AND RETURN

| | | | | | | | | | | |
|----------|-------------|------|------------|-----------|------|--------|----|----------------|-----|-------------------|
| Designer | SUGLIANI R. | Date | 2020-10-13 | Tolerance | ±0.3 | Units: | mm | Series | M12 | Drawing n. 1-1 |
| Approved | CIMMINO L. | Date | 2020-10-13 | Scale | 1:1 | Size: | A4 | Customer code: | | |



DESCRIPTION

CIRCULAR CONNECTOR M12, MALE, TO PANEL, 4POLES, FRONTAL MOUNTING, PG9 THREAD, COMPLETE WITH CUT, WITH CONTACTS SUITABLE TO BE SOLDERED ON PCB. CONNECTOR WITHOUT ANY LOGO

H.T.P. PART NUMBER

12MQ4000-PG9-CUT