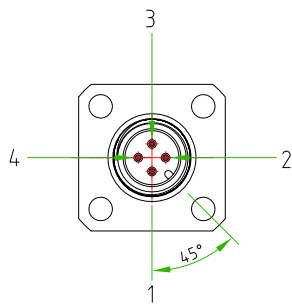
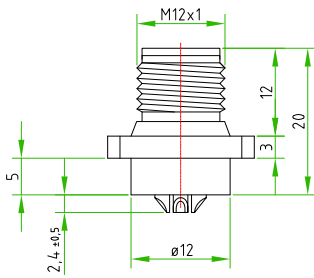
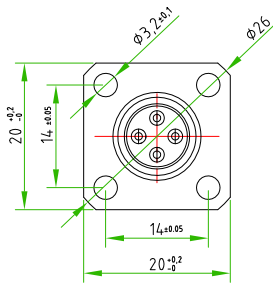
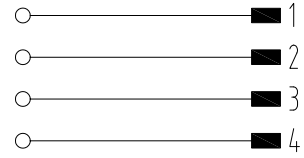


|      |        |      |        |          |
|------|--------|------|--------|----------|
| Rev. | Modify | Date | Signed | Approved |
|      |        |      |        |          |

|      |        |      |        |          |
|------|--------|------|--------|----------|
| Rev. | Modify | Date | Signed | Approved |
|      |        |      |        |          |

|      |        |      |        |          |
|------|--------|------|--------|----------|
| Rev. | Modify | Date | Signed | Approved |
|      |        |      |        |          |



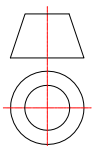
PAY ATTENTION to the position of the polarization key towards the square flange.

|                    |                              |   |
|--------------------|------------------------------|---|
| CONNECTOR FEATURES | PRODUCT TYPE                 | M12 CIRCULAR CONNECTOR TO PANEL WITH FLANGE 20x20mm |
|                    | TYPE MOUNTING                | FRONTAL MOUNTING                                    |
|                    | CONTACTS TYPE                | MALE 4POLES   |
|                    | NUMBER OF CONTACTS CONNECTED | N°4   |
|                    | HOUSING MATERIAL             | BRASS+NICKEL PLATED                                 |
|                    | FLANGE SIZE                  | 20x20mm   |
|                    | FIXING HOLES DIAMETER (X4)   | ø3,2mm  |
|                    | FIXING HOLES DISTANCE        | 14x14mm   |
|                    | PROTECTION CLASS             | IP67  |
|                    | RATED VOLTAGE                | 250V AC/DC  |
|                    | RATED CURRENT                | 4A  |
|                    | CONNECTOR WITHOUT ANY LOGO   |   |

|                        |      |
|------------------------|------|
| CUSTOMER APPROVAL      |      |
| SIGNATURE              | DATE |
|                        |      |
| PLEASE SIGN AND RETURN |      |

A4

|          |             |      |            |           |      |        |    |                |     |            |
|----------|-------------|------|------------|-----------|------|--------|----|----------------|-----|------------|
| Designer | SUGLIANI R. | Date | 2017-05-29 | Tolerance | ±0.3 | Units: | mm | Series         | M12 | Drawing n. |
| Approved | CIMMINO L.  | Date | 2017-05-29 | Scale     | 1:1  | Size:  | A4 | Customer code: |     |            |



DESCRIPTION

CIRCULAR CONNECTOR M12, MALE, TO PANEL, 4 POLES, FRONTAL MOUNTING, WITH FIXING FLANGE 20x20, FIXING HOLES DISTANCE 14x14, WITH SOLDERED CONTACTS CONNECTOR WITHOUT ANY LOGO

H.T.P. PART NUMBER

12MP4000-FL