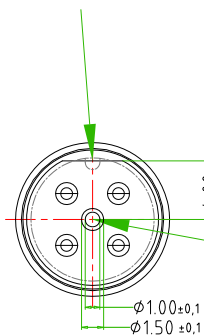


Rev.	Modify	Date	Signed	Approved

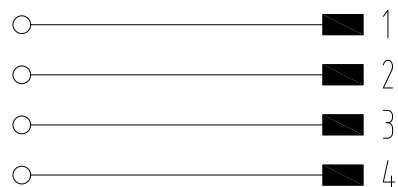
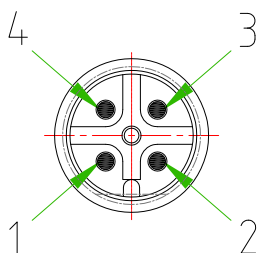
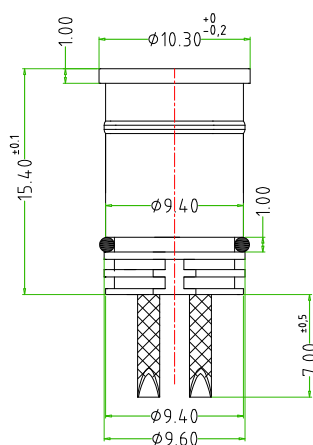
Rev.	Modify	Date	Signed	Approved

Rev.	Modify	Date	Signed	Approved

 This internal core has the CUT on the your back side.
PLEASE PAY ATTENTION: THE POSITION OF THE CUT OF
THE BACK SIDE MUST BE PERPENDICULAR TO THE
POLARIZATION KEY.



CENTRAL HOLE OPEN



CONNECTOR FEATURES	PRODUCT TYPE	M12 INTERNALCORE OF PANEL CONNECTOR
	INTERNAL CORE TYPE	MALE
	INTERNAL CORE MATERIAL	PA66
	O-RING MATERIAL	NBR
	NUMBER OF CONTACTS	N°4(SHOLES)
	CONTACT TYPE	TO SOLDER WIRES
	RATED VOLTAGE	250V AC/DC
	RATED CURRENT	4A
	INTERNAL CORE WITHOUT ANY LOGO	

CUSTOMER APPROVAL

SIGNATURE

DATE

PLEASE SIGN
AND RETURN

Designer	SUGLIANI R.	Date	2019-03-01	Tolerance	±0.2	Units:	mm	Series	M12	Drawing n. 1-1
Approved	CIMMINO L.	Date	2019-03-01	Scale	2:1	Size:	A4	Customer code:		



DESCRIPTION

M12 INTERNAL CORE OF CIRCULAR CONNECTOR TO PANEL, MALE, BLACK COLOUR,
4 POLES, WITH SOLDER WIRES CONTACTS.
INTERNAL CORE WITHOUT ANY LOGO.

H.T.P. PART NUMBER

12MN4-000

A4

