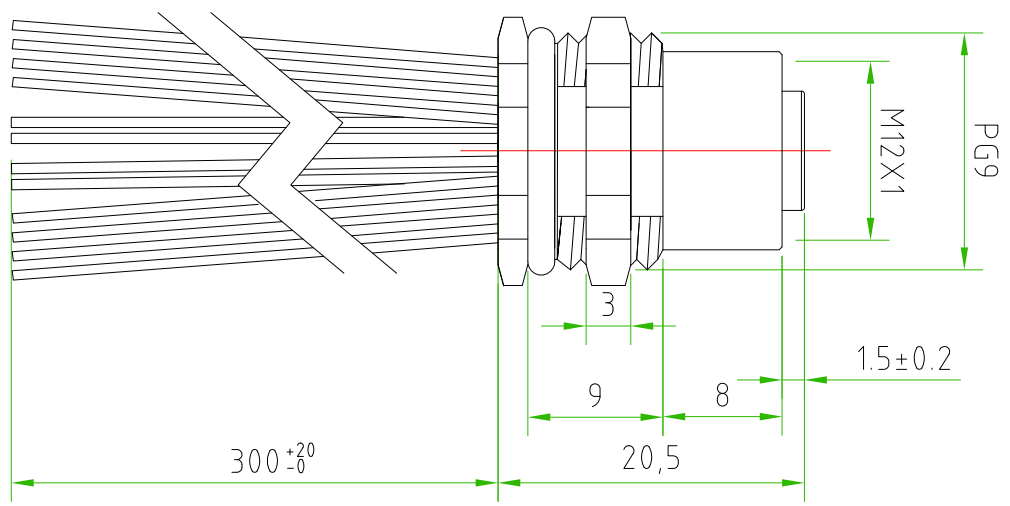
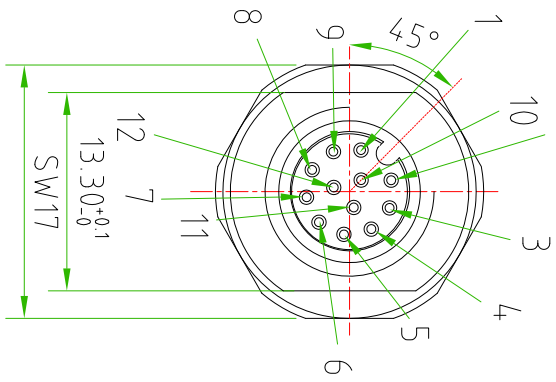
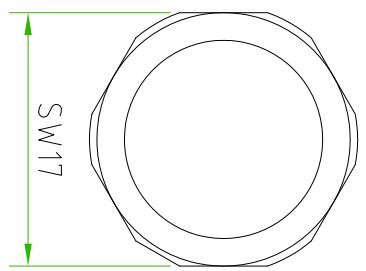


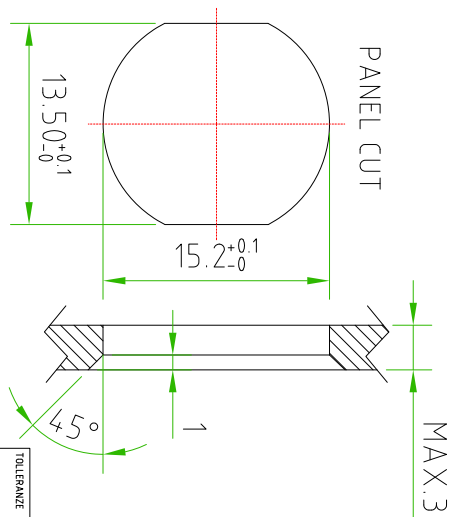
- BROWN ○ — C 1
- BLUE ○ — C 2
- WHITE ○ — C 3
- GREEN ○ — C 4
- PINK ○ — C 5
- YELLOW ○ — C 6
- BLACK ○ — C 7
- GREY ○ — C 8
- RED ○ — C 9
- VIOLET ○ — C 10
- ORANGE ○ — C 11
- TRANSPARENT ○ — C 12



PAY ATTENTION to the CUT of the thread and the positioning of the internal core



WIRES FEATURES		CONNECTOR FEATURES	
CONNECTOR TYPE		M12 TO PANEL	
MOUNTING TYPE		BACK	
CONTACT TYPE		FEMALE	
NUMBER OF CONTACTS CONNECTED		n°12	
HOUSING MATERIAL		Brass+nickel plated (CuZnNi)	
FIXING THREAD		PG9	
SWITCH FIXED NUT		SW17	
CONTACT TYPE		SOLDERED CONTACTS	
SIZE CUT		13.3mm -0/+0.1	
RATED VOLTAGE		30V AC/DC	
RATED CURRENT		1,5A	
CONNECTOR WITHOUT H.T.P.LOGO			
CONDUCTOR MATERIAL		TP0	
CONDUCTOR LENGHT		300mm	
CONDUCTOR SECTION		0.25mm²	
n°OF CONDUCTORS		12	



TOLLERANZE

±0.2

DISIGNATORE

ROBERTO SUGLIANI

DATA

11-01-2017

SCALE

2:1

DISIGNO N.

UDM

ANGOLO

CONTROLLO

TP0

M12

MATERIALE

DESCRIPTION

M12 FEMALE PANEL 12 POLES BACK MOUNTING PG9 WITH SOLDERED CONTACTS WITH CUT ON THE THREAD PG9 N°12 WIRES 0.25mm² L=300mm

H.T.P.

12FR12510C-PG9-CUTIS