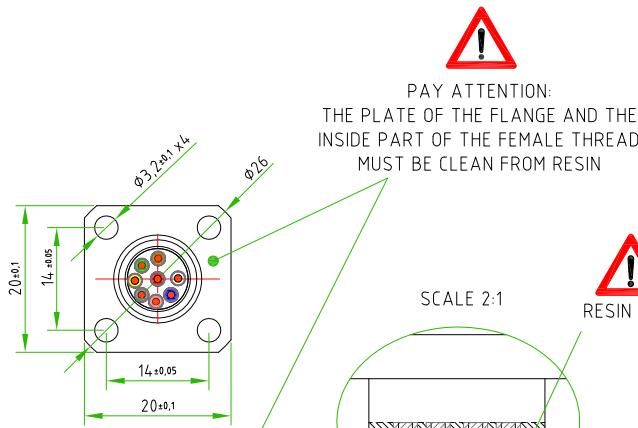


Rev.				
Modify				
Date				
Signed				
Approved				

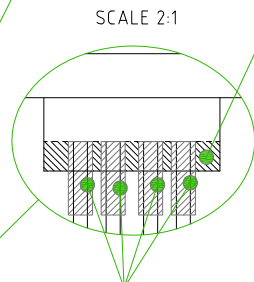
Rev.				
Modify				
Date				
Signed				
Approved				

Rev.				
Modify				
Date				
Signed				
Approved				

- WHITE ○ ————— C 1
- BROWN ○ ————— C 2
- GREEN ○ ————— C 3
- YELLOW ○ ————— C 4
- GREY ○ ————— C 5
- PINK ○ ————— C 6
- BLUE ○ ————— C 7
- RED ○ ————— C 8

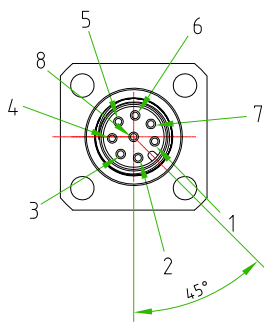
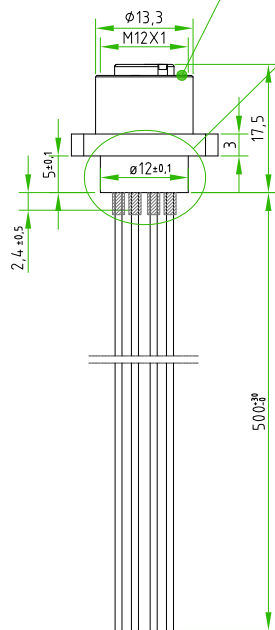


**! PAY ATTENTION:**  
THE PLATE OF THE FLANGE AND THE  
INSIDE PART OF THE FEMALE THREAD  
MUST BE CLEAN FROM RESIN



**! RESIN ZONE**

**! THERMO REDUCING TUBE**



**! PAY ATTENTION** to the position of the polarization key.

CONNECTOR FEATURES	
PRODUCT TYPE	M12 CIRCULAR CONNECTOR TO PANEL WITH FLANGE 20x20mm WITH WIRES
TYPE MOUNTING	FRONTAL MOUNTING
CONTACTS TYPE	FEMALE 8POLES
NUMBER OF CONTACTS CONNECTED	N°8
HOUSING MATERIAL	BRASS+NICKEL PLATED
FLANGE SIZE	20x20mm
FIXING HOLES DIAMETER (X4)	3,2mm
FIXING HOLES DISTANCE	14x14mm
PROTECTION CLASS	IP67
RATED VOLTAGE	30V AC/DC
RATED CURRENT	2A
CONNECTOR WITHOUT ANY LOGO	
WIRES FEATURES	
NUMBER OF CONDUCTORS	N°8
CONDUCTORS SECTION	0,25mm <sup>2</sup>
CONDUCTORS INSULATION MATERIAL	PVC
CONDUCTORS LENGHT	500mm

**! PAY ATTENTION:**  
ON EACH CONDUCTOR MUST BE APPLIED THE THERMO REDUCING TUBE

CUSTOMER APPROVAL	
SIGNATURE	DATE
PLEASE SIGN AND RETURN	

Designer	SUGLIANI R.	Date	2018-05-28	Tolerance	±0.3	Units:	mm	Series	M12	Drawing n.
Approved	CIMMINO L.	Date	2018-05-28	Scale	1:1	Size:	A4	Customer code:		

**DESCRIPTION**  
CIRCULAR CONNECTOR M12,FEMALE,TO PANEL,8POLES,FRONTAL MOUNTING,WITH FIXING FLANGE 20x20,FIXING HOLES DISTANCE 14x14,WITH N°8 WIRES PVC 0,25mm<sup>2</sup> L=500mm CONNECTOR WITHOUT ANY LOGO

H.T.P.PART NUMBER

12FP8A0E-FL



A4

