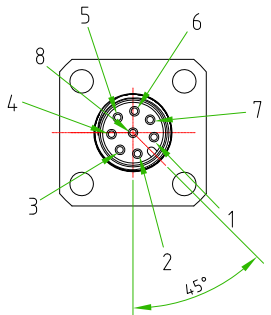
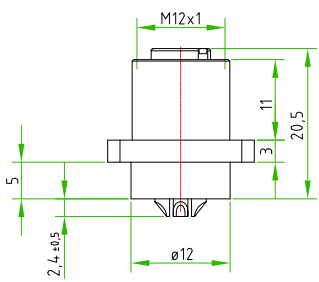
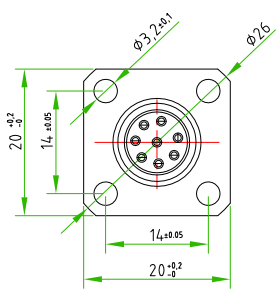
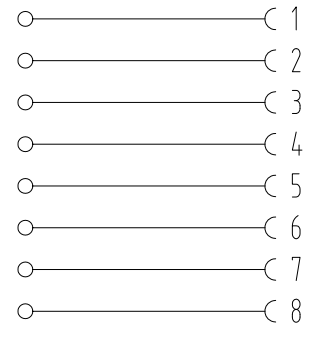


Rev.	Modify	Date	Signed	Approved

Rev.	Modify	Date	Signed	Approved

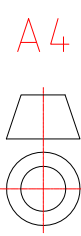
Rev.	Modify	Date	Signed	Approved



PAY ATTENTION to the position of the polarization key towards the square flange.

CONNECTOR FEATURES	PRODUCT TYPE	M12 CIRCULAR CONNECTOR TO PANEL WITH FLANGE 20x20mm
	TYPE MOUNTING	FRONTAL MOUNTING
	CONTACTS TYPE	FEMALE 8POLES
	NUMBER OF CONTACTS CONNECTED	N°8
	HOUSING MATERIAL	BRASS+NICKEL PLATED
	FLANGE SIZE	20x20mm
	FIXING HOLES DIAMETER (X4)	ø3,2mm
	FIXING HOLES DISTANCE	14x14mm
	PROTECTION CLASS	IP67
	RATED VOLTAGE	30V AC/DC
	RATED CURRENT	2A
	CONNECTOR WITHOUT ANY LOGO	

CUSTOMER APPROVAL	
SIGNATURE	DATE
PLEASE SIGN AND RETURN	



Designer	SUGLIANI R.	Date	2017-05-29	Tolerance	±0.3	Units:	mm	Series	M12	Drawing n.
Approved	CIMMINO L.	Date	2017-05-29	Scale	1:1	Size:	A4	Customer code:		

	DESCRIPTION CIRCULAR CONNECTOR M12,FEMALE,TO PANEL,8POLES,FRONTAL MOUNTING,WITH FIXING FLANGE 20x20,FIXING HOLES DISTANCE 14x14,WITH SOLDERED CONTACTS CONNECTOR WITHOUT ANY LOGO	H.T.P.PART NUMBER 12FP8000-FL
--	---	---