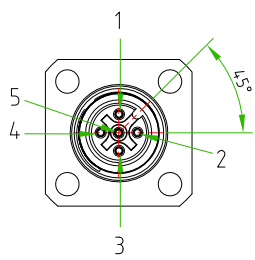
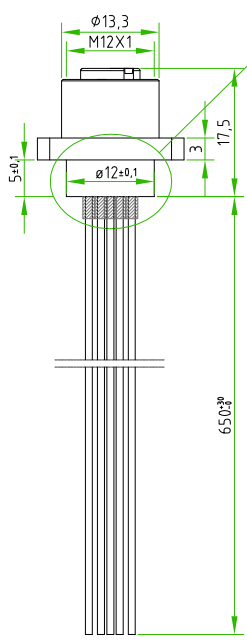
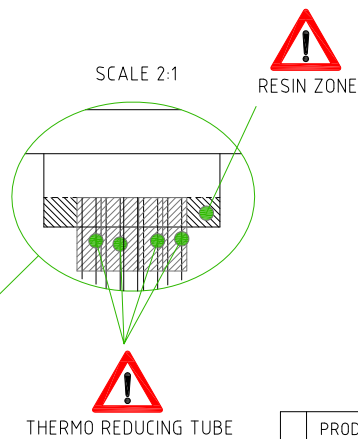
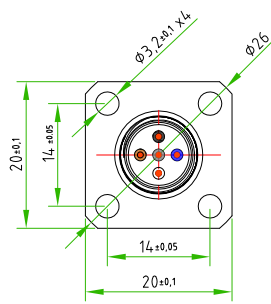


Rev.	Modify	Date	Signed	Approved

Rev.	Modify	Date	Signed	Approved

Rev.	Modify	Date	Signed	Approved

- BROWN ○ ————— C 1
- WHITE ○ ————— C 2
- BLUE ○ ————— C 3
- BLACK ○ ————— C 4
- GREY ○ ————— C 5



PAY ATTENTION to the position of the polarization key.

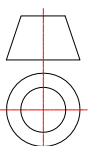
CONNECTOR FEATURES	
PRODUCT TYPE	M12 CIRCULAR CONNECTOR TO PANEL WITH FLANGE 20x20mm WITH WIRES
TYPE MOUNTING	FRONTAL MOUNTING
CONTACTS TYPE	FEMALE 5POLES
NUMBER OF CONTACTS CONNECTED	N°5
HOUSING MATERIAL	BRASS+NICKEL PLATED
FLANGE SIZE	20x20mm
FIXING HOLES DIAMETER (X4)	3.2mm
FIXING HOLES DISTANCE	14x14mm
PROTECTION CLASS	IP67
RATED VOLTAGE	60V AC/DC
RATED CURRENT	4A
CONNECTOR WITHOUT ANY LOGO	
WIRES FEATURES	
NUMBER OF CONDUCTORS	N°5
CONDUCTORS SECTION	0,25mm ²
CONDUCTORS INSULATION MATERIAL	PVC
CONDUCTORS LENGHT	650mm

PAY ATTENTION: ON EACH CONDUCTOR MUST BE APPLIED THE THERMO REDUCING TUBE

CUSTOMER APPROVAL	
SIGNATURE	DATE
PLEASE SIGN AND RETURN	

Designer	CIMMINO L.	Date	2018-09-13	Tolerance	±0.3	Units:	mm	Series	M12	Drawing n.	1-1
Approved	SUGLIANI R.	Date	2018-09-13	Scale	1:1	Size:	A4	Customer code:			

A4



DESCRIPTION
 CIRCULAR CONNECTOR M12,FEMALE,TO PANEL,5POLES,FRONTAL MOUNTING,
 WITH FIXING FLANGE 20mmx20mm,FIXING HOLES DISTANCE 14mmx14mm,
 WITH N°5 WIRES PVC 0,25mm² L=650mm
 CONNECTOR WITHOUT ANY LOGO

H.T.P.PART NUMBER
 12FP5A0F5-FL