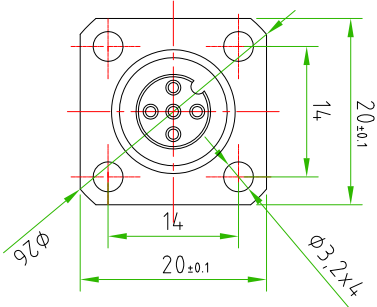
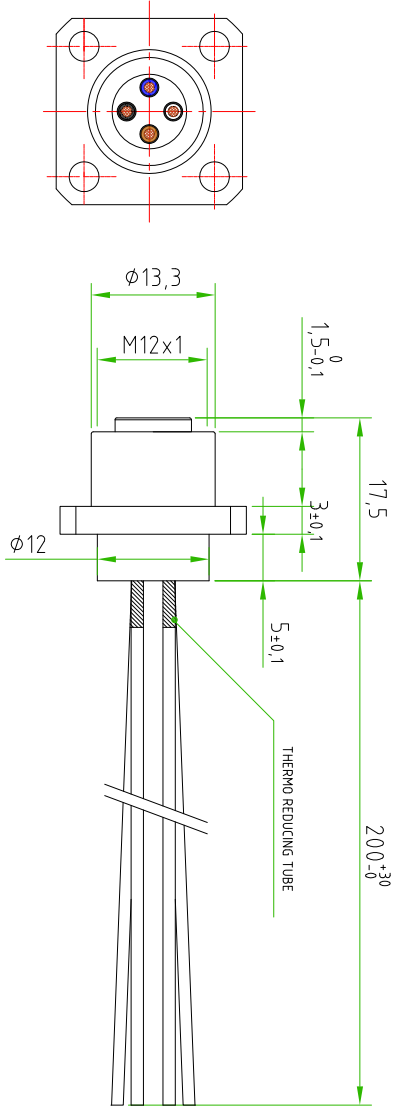
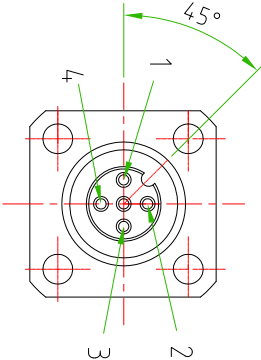


- BROWN — C 1
- WHITE — C 2
- BLUE — C 3
- BLACK — C 4



ATTENTION

POSITION TO THE POLARIZATION KEY



CONNECTOR FEATURES

CONNECTOR TYPE	M12 TO PANEL WITH FLANGE
MOUNTING TYPE	FRONTAL
CONTACT TYPE	FEMALE
NUMBER OF CONTACTS CONNECTED	4
HOUSING MATERIAL	Brass+nickel plated (CuZnNi)
SIZE OF FLANGE	20X20
DIAMETER OF FIXING HOLES	3,2mm (x4)
FIXING HOLES DISTANCE	14mm
CONDUCTOR MATERIAL	PVC
CONDUCTOR LENGHT	200mm
CONDUCTOR SECTION	0,25mm ²
n°OF CONDUCTORS	4
RATED VOLTAGE	250V AC/DC
RATED CURRENT	4A
ON EACH CONTACT MUST BE APPLIED THE THERMOREDUCING TUBE	
CONNECTOR WITHOUT ANY LOGO	

TOLLERANZE		±0,1	DISEGNATORE	DATA	SCALE	PESO
UDM	ANGOLO		LORENZO CIMINO	02-12-2014	TO FIT	
DESCRIZIONE		M12 FEMALE TO PANEL + FLANGE 20X20 WITH N.L. WIRES PVC 0,25mm ² L=200mm, COMPLETE WITH THE THERMOREDUCING TUBE. CONNECTOR WITHOUT ANY LOGO.		TR90	TO FIT	MATERIALE
				M12		
H.T.P. HIGH TECH PRODUCTS				CODE	12FP4A0B-FL	