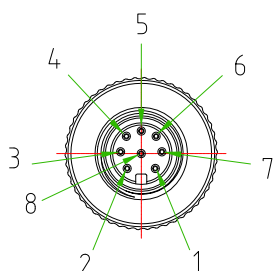
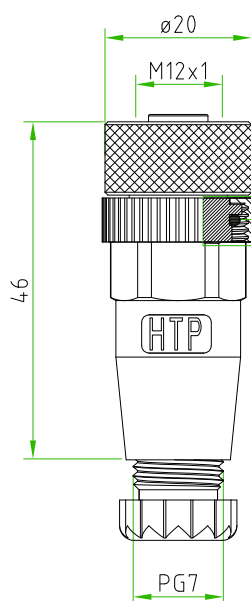
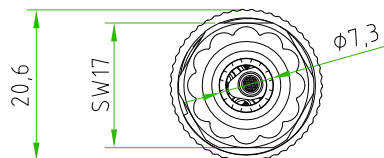


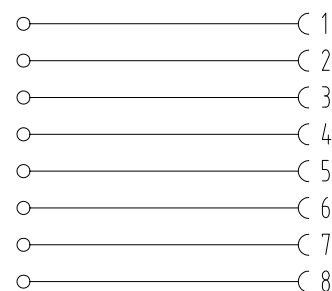
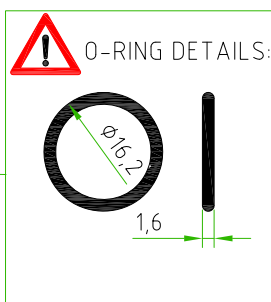
Rev.	Modify	Date	Signed	Approved


Rev.	Modify	Date	Signed	Approved

Rev.	Modify	Date	Signed	Approved
01	-	2021.04.27	SUGLIANI	CIMMINO



REV.01



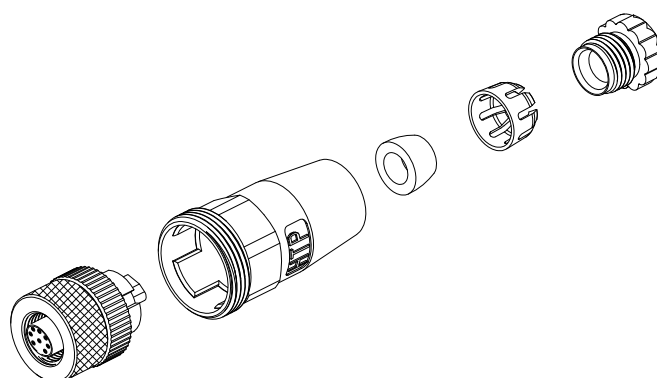
CONNECTOR FEATURES	PRODUCT TYPE	M12 CIRCULAR CONNECTOR FIELD ATTACHABLE
	CONNECTOR TYPE	STRAIGHT 180°
	HOUSING MATERIAL/COLOUR	PA66+30%GF/BLACK
	PRESS-CABLE MATERIAL/COLOUR	PA66/BLACK
	INTERNAL CORE MATERIAL/COLOUR	PA66/BLACK
	M12 COUPLING NUT MATERIAL	BRASS + NICKEL PLATED
	CONTACTS TYPE	FEMALE SCREW CONTACTS
	NUMBER OF POLES	8POLES
	CABLE EXIT	PG7
	SUITABLE CABLE	FROM 4mm TO 6mm
	MAX.CONDUCTOR SIZE	0,75mm ² (AWG18)
	PROTECTION CLASS	IP67
	RATED VOLTAGE	30V AC/DC
	RATED CURRENT	2A
	CONNECTOR TEMPERATURE RANGE	from -40°C to +90°C
	CONNECTOR WITH H.T.P. LOGO	
	 PACKAGING: SINGLY PACKED IN THE PLASTIC BAG (PLASTIC BAG WITHOUT ANY LOGO AND LABEL)	

CUSTOMER APPROVAL

SIGNATURE

DATE

PLEASE SIGN
AND RETURN



Designer	SUGLIANI R.	Date	2019-03-15	Tolerance	±0.3	Units:	mm	Series	M12	Drawing n. 1-1
Approved	CIMMINO L.	Date	2019-03-15	Scale	1:1	Size:	A4	Customer code:		



DESCRIPTION

CIRCULAR CONNECTOR M12 FIELD ATTACHABLE, FEMALE, STRAIGHT 180°, 8POLES, PG7 EXIT CABLE. CONNECTOR WITH H.T.P.LOGO

H.T.P.PART NUMBER

12FC8000