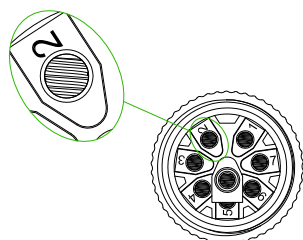


Rev.					
Modify					
Date					
Signed					
Approved					

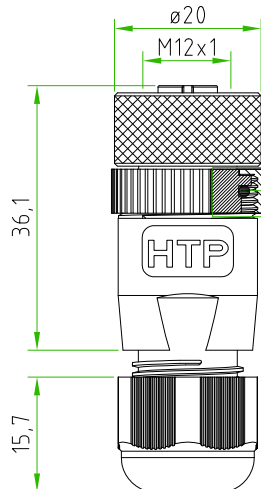
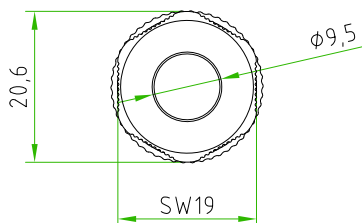
Rev.					
Modify					
Date					
Signed					
Approved					

Rev.					
Modify					
Date					
Signed					
Approved					

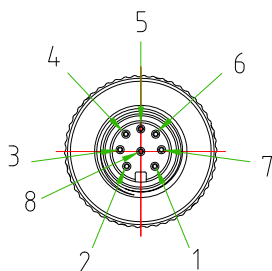
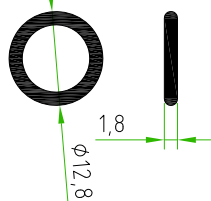


THE PINS NUMBERING MUST BE  
LASER PRINTED ON THE CONTACTS

- ————— C 1
- ————— C 2
- ————— C 3
- ————— C 4
- ————— C 5
- ————— C 6
- ————— C 7
- ————— C 8



O-RING DETAILS:



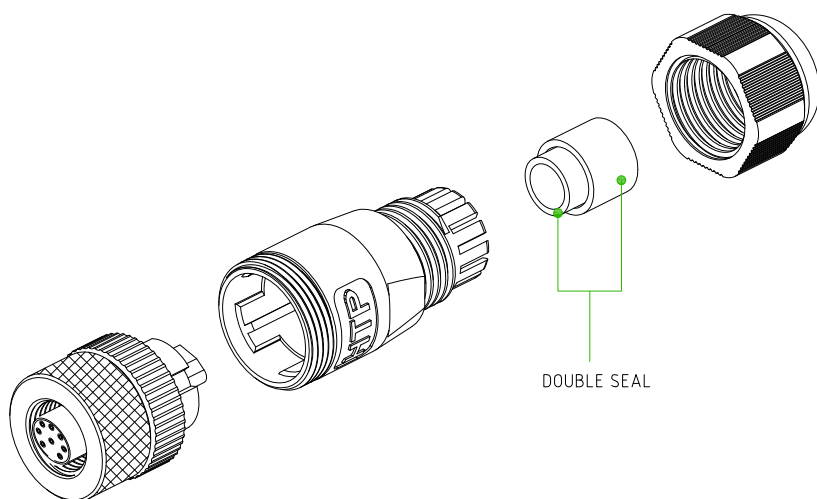
CONNECTOR FEATURES

PRODUCT TYPE	M12 CIRCULAR CONNECTOR FIELD ATTACHABLE
CONNECTOR TYPE	STRAIGHT 180°
HOUSING MATERIAL/COLOUR	PA66+30%GF/BLACK
PRESS-CABLE MATERIAL/COLOUR	PA66/BLACK
INTERNAL CORE MATERIAL/COLOUR	PA66/BLACK
M12 COUPLING NUT MATERIAL	BRASS + NICKEL PLATED
CONTACTS TYPE	FEMALE SCREW CONTACTS
NUMBER OF POLES	8POLES
CABLE EXIT	SK
SUITABLE CABLE	FROM 4mm TO 8.6mm
MAX.CONDUCTOR SIZE	0.75mm <sup>2</sup> (AWG18)
PROTECTION CLASS	IP67
RATED VOLTAGE	30V AC/DC
RATED CURRENT	2A
CONNECTOR TEMPERATURE RANGE	from -40°C to +90°C
DOUBLE SEAL MATERIAL	PVC
CONNECTOR WITH H.T.P. LOGO	
PACKAGING: SINGLY PACKED IN THE PLASTIC BAG (PLASTIC BAG WITHOUT ANY LOGO AND LABEL)	

CUSTOMER APPROVAL

SIGNATURE      DATE

PLEASE SIGN  
AND RETURN



Designer	SUGLIANI R.	Date	2021-02-05	Tolerance	±0.3	Units:	mm	Series	M12	Drawing n. 1-1
Approved	CIMMINO L.	Date	2021-02-05	Scale	1:1	Size:	A4	Customer code:		



DESCRIPTION

CIRCULAR CONNECTOR M12 FIELD ATTACHABLE, FEMALE, STRAIGHT 180°, 8POLES, EXIT CABLE FROM 4mm TO 8.6mm  
CONNECTOR WITH H.T.P.LOGO

H.T.P.PART NUMBER

12FC8000-SK

