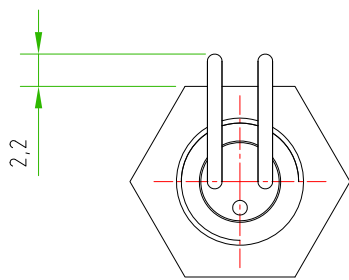
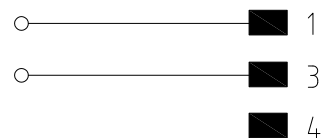
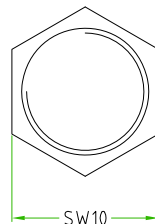


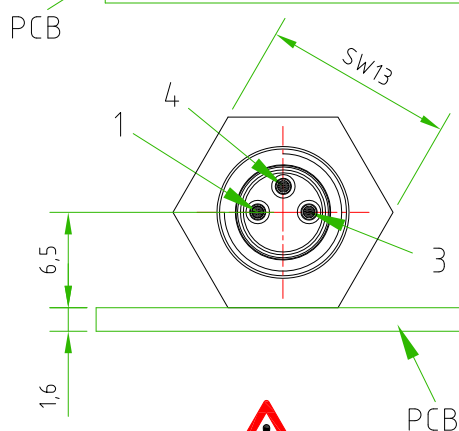
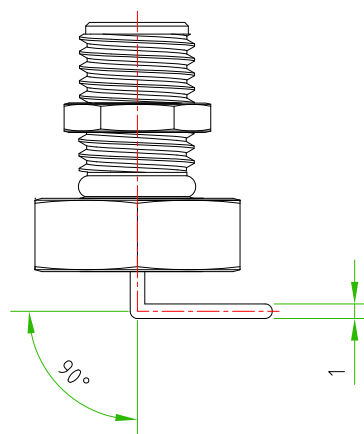
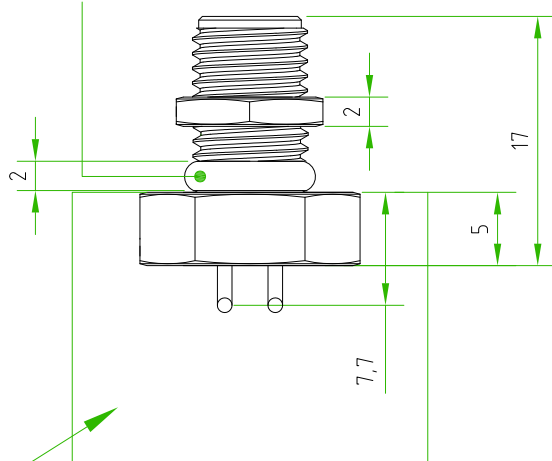
Rev.	Modify	Date	Signed	Approved
Rev.	Modify	Date	Signed	Approved
Rev.	Modify	Date	Signed	Approved
Rev.	Modify	Date	Signed	Approved



MOBILE NUT




PAY ATTENTION:
MUST BE USED THE O-RING,
THICKNESS 2mm

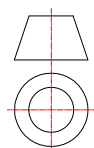


PAY ATTENTION to the position
of the internal core towards the
CUT and the exagonal fixed nut.

CUSTOMER APPROVAL	
SIGNATURE	DATE
PLEASE SIGN AND RETURN	

CONNECTOR FEATURES	PRODUCT TYPE	M8 CIRCULAR CONNECTOR TO PANEL WITH 90° CONTACTS SUITABLE FOR PCB
	TYPE MOUNTING	BACK MOUNTING
	CONTACTS TYPE	MALE 90° 3POLES
	NUMBER OF CONTACTS CONNECTED	N°2
	HOUSING MATERIAL	BRASS+NICKEL PLATED
	O-RING MATERIAL	 NBR (THICKNESS 2mm)
	FIXING THREAD	M8x1
	SIZE FIXED NUT(SW)	SW13
	SIZE MOBILE NUT(SW)	SW10
	PROTECTION CLASS	IP67
	RATED VOLTAGE	50V AC/ 60V DC
	RATED CURRENT	3A
	CONNECTOR WITHOUT ANY LOGO	

A4



Designer	CIMMINO L.	Date	2019-10-22	Tolerance	±0.3	Units	mm	Series	M8	Drawing n. 1-1
Approved	SUGLIANI R.	Date	2019-10-22	Scale	2:1	Size	A4	Customer code:		



DESCRIPTION
CIRCULAR CONNECTOR M8, MALE, TO PANEL, 3POLES, BACK MOUNTING, WITH N°2 90° CONTACT SUITABLE FOR PCB CONNECTOR WITHOUT ANY LOGO

H.T.P. PART NUMBER

08MM3000-M8X1-DE